

## DOUBLE LEAF DOORS NEW GENERATION

### WITH THERMAL BREAK (2LD)

Dear customer

We have designed a new solution of double leave doors, which has substituted the current solution from 1st April 2019. Double leave doors are produced from aluminum profiles and insulated panels with thickness 40mm. This new solution we currently produce **with thermal break** aluminum profiles. The **option without thermal break** will be available during May 2019. Comparing to the previous type of 2LD, the new generation is much more complete-looking and more solid-performing.

This new solution brings qualitatively new standards thanks to aluminum profiles and visually clear joints with no riveting. New robust adjustable hinges, and high-quality locks placed into the door frame (in standard height 1050mm), are part of the doors. There is a possibility to extend 2LD with other doors accessories, of course.



### HOW TO ORDER

Double leave doors are fitted to EXTERNAL dimensions, threshold included (see attached drawings)

Type	Installation	Opening direction	Handle in
01	in the opening	outside	left door leaf
02	in the opening	outside	right door leaf
03	in the opening	inside	left door leaf
04	in the opening	inside	right door leaf

### OPTIONS AND ACCESSORIES

- One side/double-sided profiles painting and panels acc. to RAL/NCS/BS
- Hinges painting
- Laminating the panels acc. to the sample book (PVC laminating foils)
- Windows from the standard offer (frames painting possible)
- Aluminum glazed sections (glazing acc. to standard offer / ALU frame painting possible)
- Knob/handle, panic lock, panic beam
- Three-point lock
- Electric lock
- Vertically placed panels option
- Securing of opened leaf

## STANDARD CONFIGURATION

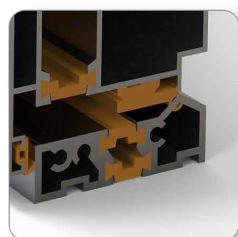
- Frame from ALU profiles 60mm with thermal break
- Filling from door panels 40mm, filled with CFC free PUR foam with closed cells, or ALU sections with acrylate glazing (FVE)
- Possibility of inwards/outwards opening
- Maximal outer frame WIDTH 3000mm
- Maximal outer frame HEIGHT 3000mm
- Minimal outer frame WIDTH 1500mm
- Minimal outer width of one leaf 750mm
- Maximal outer width of one leaf 1501mm
- Surface finish ALU profiles: silver natural anodized profiles E6/EV1 (industrial quality)
- Whole-circuit double sealing
- Threshold 20mm with thermal break
- Manual lock of side/fixed leaf



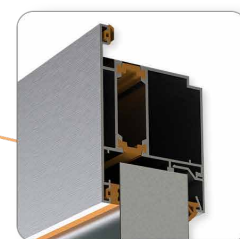
Robust hinges, adjustable in three axes



Solid locks placed in the door-frame



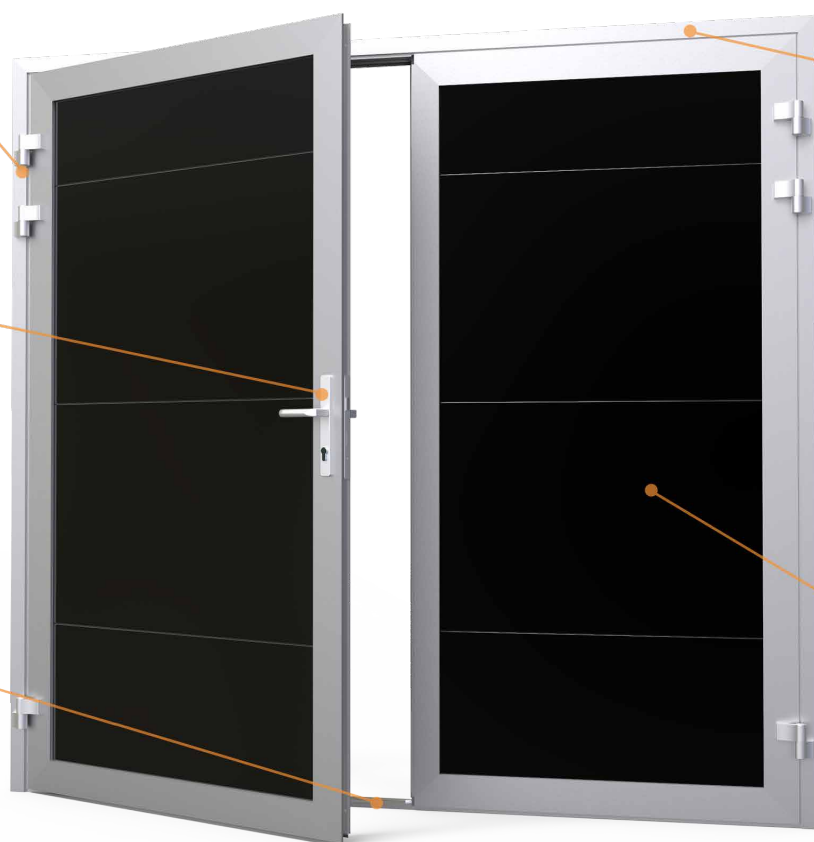
20mm threshold with thermal break



60mm aluminum profiles with thermal break and whole-circuit double sealing



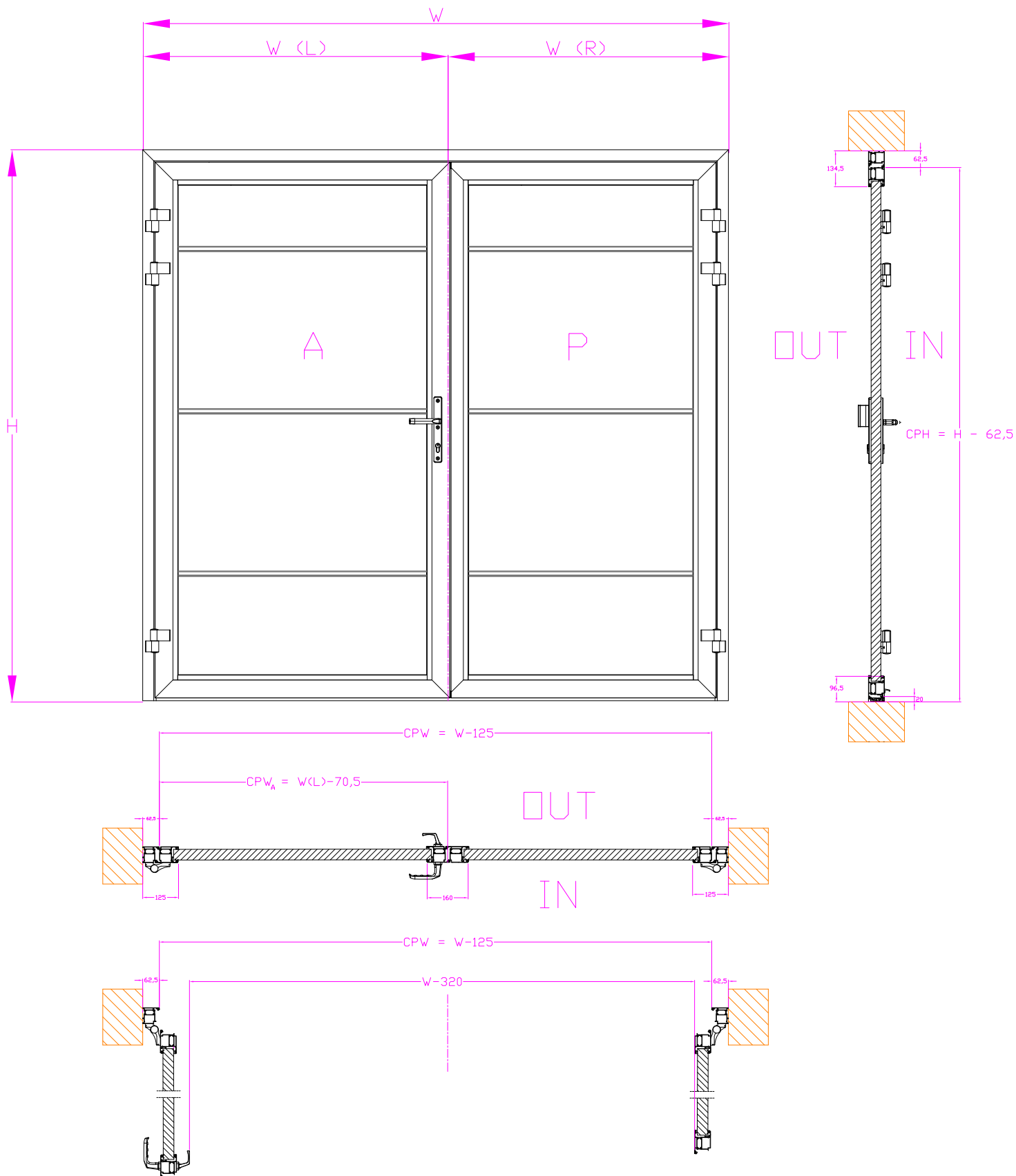
Possibility of ALU section with glazing selection range, and painting option



W – Frame width / ordering dimension  
 H – Frame height / ordering dimension

CPW – Clear pass width  
 CPH – Clear pass height  
 W(L) – Width of left wing  
 W(R) – Width of right wing  
 P – passive leaf

A - active leaf  
 CPW<sub>A</sub> - clear passage width of active leaf



W – Frame width / ordering dimension  
 H – Frame height / ordering dimension

CPW – Clear pass width  
 CPH – Clear pass height  
 W(L) – Width of left wing  
 W(R) – Width of right wing  
 P - passive leaf

A - active leaf  
 CPW<sub>A</sub> - clear passage width of active leaf

